

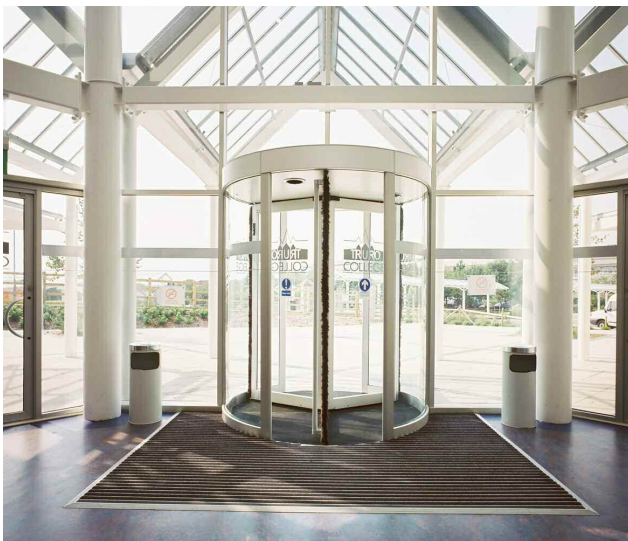
# C/S PEDIMAT MAKES THE GRADE AT THE TRURO COLLEGE ALLEN BUILDING



## Project Overview

The Allen Building is the central hub of the Truro College campus, providing facilities for Higher Education and Community Studies as well as containing the college shop and coffee shop.

The striking design of the building incorporates a three storey high, light and spacious atrium over the college's main reception area. The project required an attractive yet practical entrance mat that would compliment the design whilst maintaining high performance in the busy entrance area, ensuring that dirt and grime were efficiently removed from the soles of shoes.



C/S Pedimat entrance flooring system, with C/S performance textile inserts, matched both these requirements. The 11mm deep, aluminium rail entrance mat, which was surfaced mounted in a ramped frame, has got excellent moisture and dirt removal capabilities and is easy to maintain, whilst its deep colour and crisp lines accentuate the bright, modern look of the foyer.

## Architect:

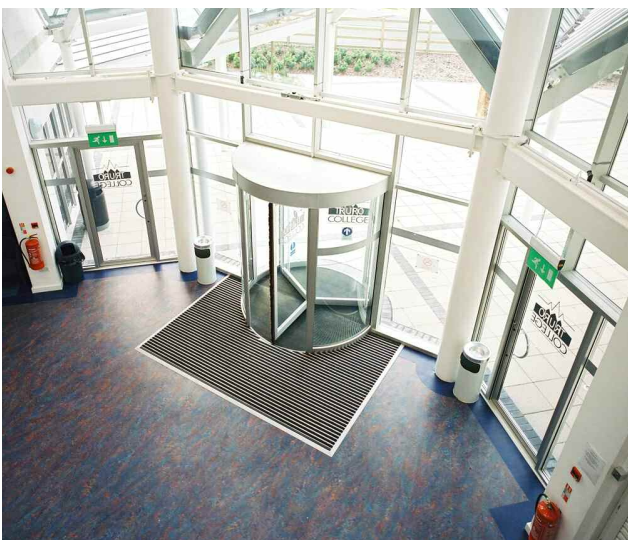
Lilly Lewarne Partnership, Truro

## Contractor:

Midas Construction

## Flooring Contractor:

Peter Williams Flooring and Ceilings, Redruth



 **Construction Specialties™**

Tel: 01296 652800 Website: [www.c-sgroup.co.uk](http://www.c-sgroup.co.uk)