

# C/S CONCRETE SEALER™

An economical, easy to apply sealer system, which provides a dust-free and easily cleaned surface. Typically used on floors and walls of concrete storage areas, car parks and any other concrete finish needing a water resistant, dust preventive coating.

## TYPICAL APPLICATION AREAS

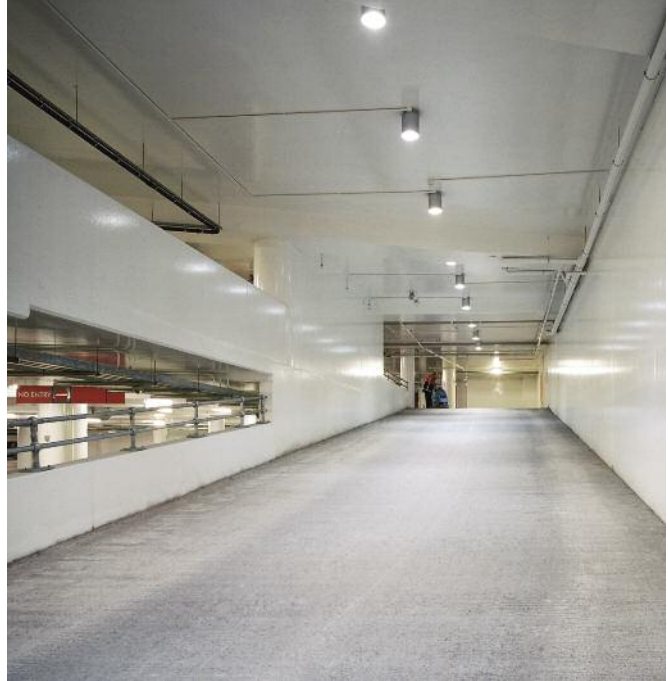
- Covered car parks
- Warehouses
- Basement and storage areas
- Any concrete, blockwork or brickwork structure that requires a dust sealer

## KEY FEATURES

- Water based system
- Fast application and quick drying
- Good penetration and post adhesion
- Very low VOC levels
- Suitable for interior applications only
- Easy to clean
- Can be spray applied

## TYPICAL SYSTEM APPLICATION

Two coats of C/S Concrete Sealer are applied directly to concrete surface using Brush and Roller.



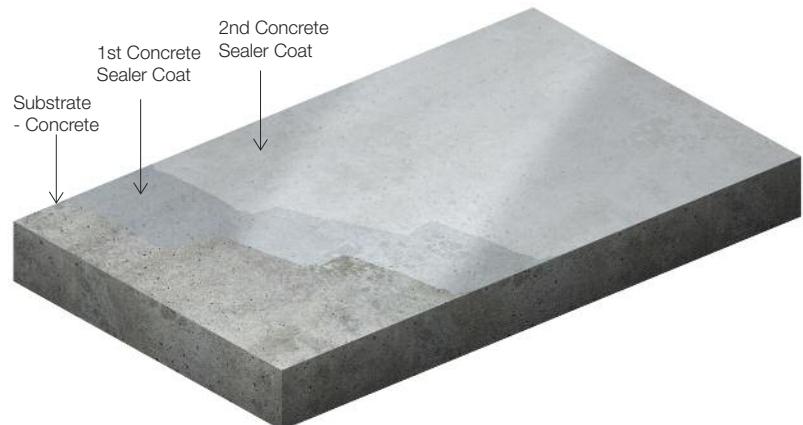
Town Centre Car Park, Athlone, Ireland

## PRODUCT PERFORMANCE

Resistant to mild cleaning chemicals.

## COLOURS AND FINISHES

C/S Concrete Sealer is a clear coating available in a Matt finish only.



Product	Coverage rates (m <sup>2</sup> /ltr)	Drying times in hours (20°C @ 60% RH )	Pack sizes (ltr)	Recommended build thickness	
				Wet film	Dry film
Concrete Sealer	10-12	2-4	5 and 20 (single pack)	180µ to 200µ (two coats)	30µ to 40µ (two coats)