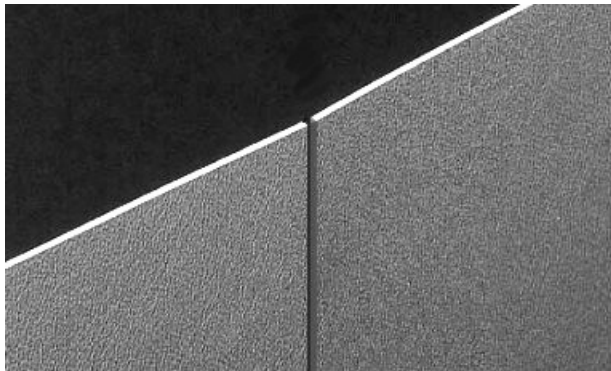


C/S Acrovyn® 2mm Sheet – Installation Instructions

3M Fastbond 30

Product Overview



General

C/S Acrovyn® will, like all materials, expand and contract with changes in temperature, roughly in the order of 0.07mm/m for every one degree Celsius rise or fall. It is important to allow for this at sheet edges, joint positions etc., when adhering the sheeting (See Table below for estimated thermal movements).

ACROVYN® - TYPICAL THERMAL MOVEMENTS				
SHEET WIDTH	MOVEMENT PER TEMPERATURE CHANGE			
	+/-5°C	+/-10°C	+/-15°C	+/-20°C
600mm	0.21mm	0.42mm	0.63mm	0.84mm
1200mm	0.42mm	0.84mm	1.26mm	1.68mm
2400mm	0.84mm	1.68mm	2.52mm	3.36mm
3000mm	1.05mm	2.10mm	3.15mm	4.20mm

Chemical and Biocidal Resistance

Acrovyn® is formulated to resist most commonly used chemical solutions, bacteria and mould growth. It contains silver nitrates, which inhibit the growth of bacteria on a clean surface. However, anti-bacterial properties of the product do not negate the need for a rigorous cleaning regime.

Tested in accordance with BS 2782-8: Method 830A: 1999, BS EN ISO 175:2001 (Chemical) and BS EN ISO 846: 1997 (Bacterial and Fungal Resistance). For complete chemical and biocidal resistance test data, please contact our Customer Service Team on +44 (0)1296 652800.

Acrovyn complies with the requirements of EC Directives and Environmental Health Officers regulations relating to materials and articles intended to come into contact with foodstuffs.

Cleaning and Maintenance

Grease and grime are easily removed from Acrovyn's non-porous surface. Even stubborn graffiti, paint and medical stains can be removed using C/S Acrovyn® Gel Cleaner.

COSHH Regulations

Construction Specialties (UK) Ltd comply with the statutory requirement for the Control of Substances Hazardous to Health Regulations 2003 (COSHH). MSD Sheets are available upon request.

Preparation

General

All new or existing wall substrates that are to receive Acrovyn® sheeting should be checked to ensure that they are clean, smooth, dry and free of dust, grease or other foreign matter. Porous surfaces, such as unpainted plaster or plasterboard, should be sealed using the recommended primer/sealer.

Generally, care should be taken to handle the sheeting correctly as careless handling may cause irreparable kinks.

Do read the installation instructions supplied, prior to commencing installation.

Do maintain the same “sheet orientation” throughout the complete application.

Do not thin out adhesive with water or solvent.

Do not rush the installation.

Do not use “Scotchbrite”, steel wool or other abrasive cleaning materials on Acrovyn® sheet.

Specific Conditions

New Drywall or Plaster

New drywall constructions should have all joints taped and sanded smooth or should have a skim coat of plaster applied. All surfaces should be wiped free of dust or, if the surface is particularly badly soiled, should be cleaned with a sugar soap solution, rinsed with clean water and allowed to dry. Fresh plaster finishes should be allowed to dry out thoroughly in line with usual industry standards when a non-porous finish is to be applied.

EXCESS MOISTURE CONTENT IN THE PLASTER WILL RESULT IN A SUB-STANDARD BOND.

Blockwork Construction

Where possible, block walls should be made smooth to ensure the maximum possible bonding area and minimise joint lines in order to achieve a flat surface to bond 2mm Acrovyn® sheet successfully.

Painted surfaces

Painted surfaces should be tested for adhesion, both of the paint to the substrate and to ensure that the paint does not react with the adhesive in any way. For the former, look for any loose or flaky paint and remove as necessary. Then, using a strip of adhesive tape, test various areas of the apparently sound paint by applying tape and then ripping it off. If significant amounts of paint adhere to the tape then the ultimate bond will be poor and it would be recommended that the paint is removed completely. To check whether the paint reacts in any way with the adhesive it is recommended that a small sample area be installed, left for 24hours and then removed. If the paint has softened where the adhesive was applied, then the paint should be removed or a compatible stabilising solution applied.

Existing wall coverings

It is recommended that existing wall coverings, such as vinyl or wallpaper be removed prior to the application of adhesive.

Installation Method Statement –

Prime any porous surfaces using primer/sealer and allow to completely dry.

Lay out the materials to be bonded, spot-check for any damage which may have occurred during shipment and advise C/S immediately if replacements are required.

Lay out the sheeting from the centre of the wall, or other obvious architectural feature so that cut sheets occur at the edges of the area. Establish a vertical or horizontal datum using a plumb line or level.

2mm Acrovyn® sheeting is normally supplied in nom. 1220mm x 2440mm for field cutting. 2mm sheeting is easily cut with a craft knife. NB. C/S Acrovyn® will, like all materials, expand and contract with changes in temperature – see Product Overview. It is important to allow for this at sheet edges, joint positions etc., when adhering the sheeting.

Once cut to size, thoroughly clean the rear face of the Acrovyn® using Isopropyl Alcohol or similar. On standard sheeting this will be the smooth, un-textured side. Avoid using heavily chlorinated solvents, such as MEK and Acetone, to clean the sheet, as these will attack and soften the Acrovyn®.

NB. It is CRITICAL that the adhesive, the Acrovyn®, the room and the walls be at a temperature of 18° - 24° Celsius for a period from 24 hours before application until 48 hours after completion.

Apply a uniform, generous coat of adhesive to both the wall surface and the back of the Acrovyn® sheet with a nylon brush, roller (texturing type), or spray. One coat is usually sufficient on most surfaces. Dull spots when dry indicate insufficient adhesive. Very porous material may require more than one coat. Allow adhesive to dry completely between coats. A uniform, glossy film indicates sufficient adhesive.

Apply adhesive only to an area that can comfortably be completed within the allotted working period, remembering that the bond must take place within four hours of the adhesive drying. NB. It is generally NOT possible to remove or reposition the Acrovyn®, once the two bonded surfaces have come into contact, as there is an immediate and significant “grab”. It is important therefore to ensure that the sheeting is in the correct position before pressing it home.

The adhesive dries sufficiently in 30 minutes under normal temperature and humidity to make bonds. High humidity will slow the drying; high temperature will speed the drying.

Once the sheeting has been adhered to the wall it is necessary to apply significant pressure to the whole, bonded, area. Particular attention should be paid to the edges of the sheet. Starting at the centre of the sheeting and working out towards the edges, firmly press the Acrovyn®, against the substrate to exclude all air and ensure the maximum contact between the sheeting and the substrate. NB. It is imperative that this smoothing and pressing operation is carried out, as failure to do so will result in a sub-standard bond. C/S recommend that a hard, 3-roller, rubber roller be utilised for this operation. These rollers are available for loan from C/S upon of a returnable deposit.

Always remove stray adhesive from the face of the sheeting with water containing a small amount of detergent before it hardens, for stubborn marks C/S Acrovyn® Gel Cleaner can be used. Cured adhesive will be much more resistant.